



Customer information packet

ECTM4312T-5G

50HP, 1185RPM, 3PH, 60HZ, 364T, A36062M, TEFC

Class - None

Division - Not Applicable

Specifications

Enclosure	TEFC
Frame	364T
Frame Material	Iron
Frequency	60.00 Hz
Motor Letter Type	Three Phase
Output @ Frequency	50.000 HP @ 60 HZ
Phase	3
Synchronous Speed @ Frequency	1200 RPM @ 60 HZ
Voltage @ Frequency	575.0 V @ 60 HZ
XP Class and Group	None
XP Division	Not Applicable
Agency Approvals	CCSAUSEEV
Ambient Temperature	40 °C
Auxillary Box	No Auxillary Box
Base Indicator	Rigid
Bearing Grease Type	Polyrex EM (-20F +300F)
Current @ Voltage	49.300 A @ 575.0 V
Design Code	B
Drip Cover	No Drip Cover
Duty Rating	CONT
Efficiency @ 100% Load	94.1 %
Feedback Device	NO FEEDBACK
Heater Indicator	Heater Included, 115 V
High Voltage Full Load Amps	49.3 a
Insulation Class	F
Inverter Code	Inverter Ready
KVA Code	G
Lifting Lugs	Standard Lifting Lugs
Motor Lead Quantity/Wire Size	3 @ 6 AWG
Motor Standards	NEMA
Motor Type	A36062M
Mounting Arrangement	F1

Part detail

Revision	B
Type	AC
Mech. spec.	
Base	
Status	PRD/A
Elec. spec.	A36WG0748
Layout	617438-196
Eff. date	06-06-2023
CD Diagram	416820-036
Poles	06
Leads	3#6
Proprietary	False
Created date	04-12-2022

Number of Poles	6
Overall Length	33.78 IN
Power Factor	81
Product Family	Cooling Tower
Pulley End Bearing Type	Ball
Pulley Face Code	Standard
Service Factor	1.15
Shaft Diameter	2.374 IN
Shaft Ground Indicator	Shaft Grounding
Shaft Rotation	Reversible
Shaft Slinger Indicator	Shaft Slinger
Speed	1185 rpm
Speed Code	Single Speed
Starting Method	Direct on line
Thermal Device - Bearing	None
Thermal Device - Winding	None

Nameplate

000613007EW

CAT.NO.	ECTM4312T-5G		SPEC NO.	A36-0001-0748					
HP	50HP	AMPS	49.3	VOLTS	575	DESIGN	B		
FRAME	364T	RPM	1185	HZ	60	AMB	40	SF	1.15
DRIVE END BEARING	65BC03JGG30A		PH	3	DUTY	CONT	INSUL.CLASS	F	
OPP D.E. BEARING	65BC03JGG30A		TYPE	P	ENCL	TEFC	CODE	G	
D.E.BRG.DATA	6313		POWER FACTOR	81		NEMA NOM EFFICIENCY	94.1		
O.D.E.BRG.DATA	6313		MAX CORR KVAR	14		GUARANTEED EFFICIENCY	93		
3/4 LOAD EFF.	94.1		NEMA NOM/CSA QUOTED EFF						
SER.NO.			MOTOR WEIGHT						

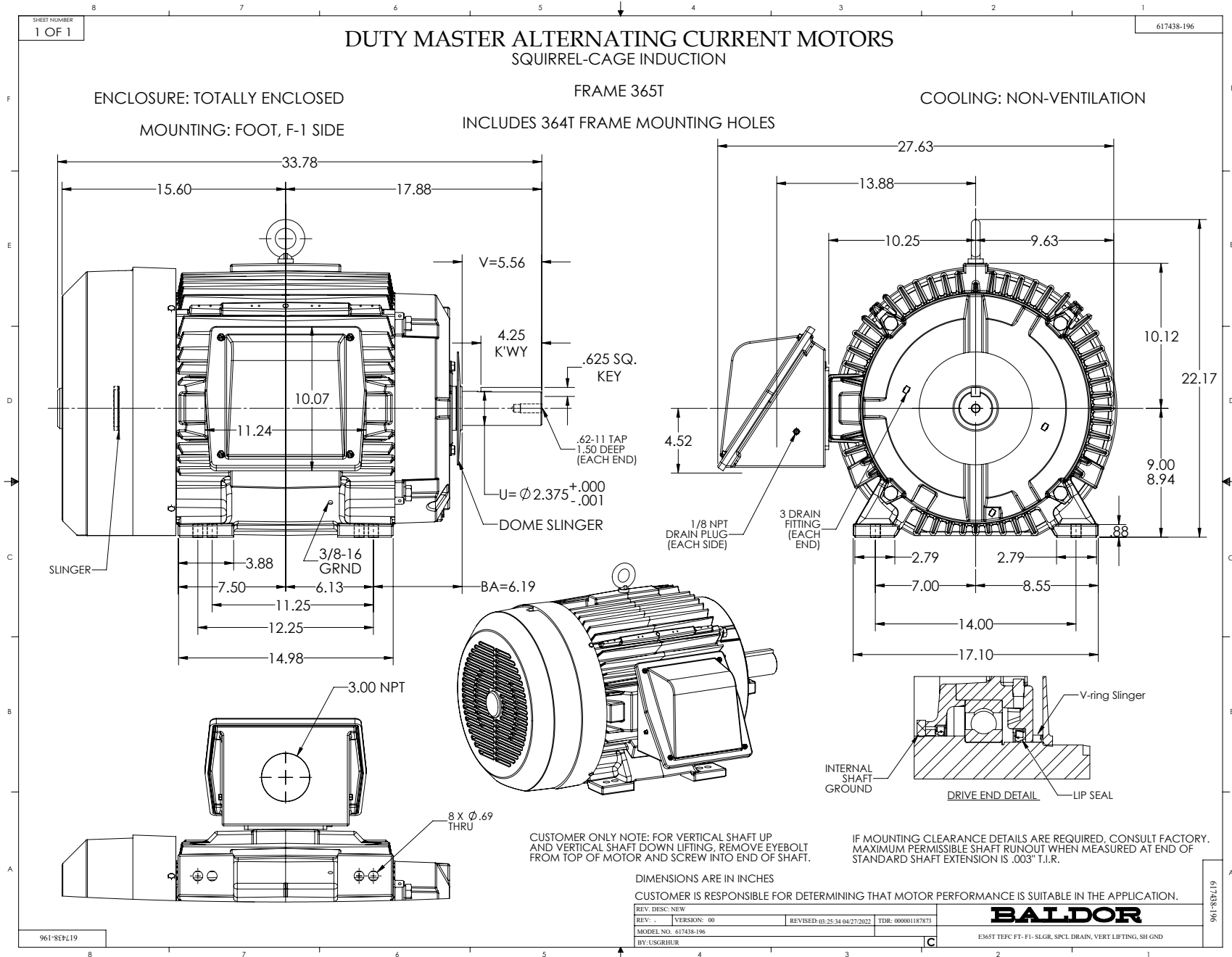
000901002AAA

INV DUTY 20:1 VT

Parts list

Part number	Description	Quantity
SA403833	SA A36-0001-0748	1.000 ea
RA395170	RA A36-0001-0748	1.000 ea
000613006PU	N/P (RELEASE QTY 10,000) UL CSA LABEL	1.000 ea
000613007EW	N/P BALDOR	1.000 ea
000692000VD	LABEL WARNING	1.000 ea
000901002AAA	N/P BLANK (RELEASE QTY 1,500)	1.000 ea
421948051	LABEL, MYLAR	1.000 ea
603866094D	HEATR P/N 017340U1 (360)	1.000 ea
004824015A	GREASE POLYREX EM	0.544 lb
032018012DN	HHCS 1/2-131-1/2 304S.S.	4.000 ea
032018024CN	HHCS 3/8-16X3 304 S.S.	3.000 ea
034017016AE	LCKW 1/2 304 S.S.	4.000 ea
034690002AB	PPLG 1/4" PLTD.	1.000 ea
034690001AB	1/8" NPT SQHDPLG	1.000 ea
085922073X	BRKT 360 SPECIAL DRAIN & LIP SEAL	1.000 ea
415028001AH	SEAL 360/400	1.000 ea
415045002E	SLGR	1.000 ea
078559034A	+F/C A 078559001A - 360	1.000 ea
415072001B	CLAMP	1.000 ea
034180012DA	KEY 1X4X1/4X1-1/2 L	1.000 ea
702676001C	FAN 360	1.000 ea
032018008AN	HHCS 1/4-20X1 304 S.S.	4.000 ea
406099000A	PLUG - FAN COVER 320-440	1.000 ea
410700004F	WSHR	1.000 ea
HA4054	SHORT T-DRAIN FITTING, .125" N.P.T.	3.000 ea
032018012DN	HHCS 1/2-131-1/2 304S.S.	4.000 ea
034017016AE	LCKW 1/2 304 S.S.	4.000 ea
032018024CN	HHCS 3/8-16X3 304 S.S.	3.000 ea
034690002AB	PPLG 1/4" PLTD.	1.000 ea
034690001AB	1/8" NPT SQHDPLG	1.000 ea
085922073X	BRKT 360 SPECIAL DRAIN & LIP SEAL	1.000 ea

415028001AH	SEAL 360/400	1.000 ea
415045002E	SLGR	1.000 ea
HW4600G56	DOME SLINGER, 7.875 OD X 2.370/2.300 ID	1.000 ea
HA4054	SHORT T-DRAIN FITTING, .125" N.P.T.	3.000 ea
423709011C	WASHER	3.000 ea
032018010CN	HHCS 3/8-16X1-1/4 304S.	4.000 ea
033512008LB	HHTTS 1/4-20X1 PLATED	4.000 ea
034000014AB	WSH ID.406 OD.812 TH.065	4.000 ea
034690001AB	1/8" NPT SQHDPLG	2.000 ea
065776000C	GASKET,MAIN CBOX, 320-400	1.000 ea
067053000B	GASK 320-400	1.000 ea
076708164	CBOX E360/400 CAST IRON 076708000BB	1.000 ea
076709000A	C/B Cover - 360	1.000 ea
415000115H	T/LUG #2AWG-4/0AWG	1.000 ea
MG1025G29	WILKOFAST, 789.229, DARK CHARCOAL GRAY	0.250 ga
033775004EA	DRSCR #6-1/4 304 S.S.	4.000 ea
034180034HA	KEY 5/8X5/8X4-1/4 L	1.000 ea
032509020C	CARRIAGE BOLT - 360	3.000 ea
000692000FF	N/P	1.000 ea
14PA1000	PACKAGING 314 GROUP COMBINED PRINT	1.000 ea
032018005DL	1/2-13 X 5/8 SILICON BRONZE HHCS	1.000 ea
LB1459	AEGIS SGR LABEL "AEGISLBL-100"	1.000 ea



416820-036

A-C MOTOR
CONNECTION DIAGRAM
STANDARD 3 LEAD CONNECTED



(N.P. 1575-BA)

REV. DESC: LOADED TO BUS, C/R 335225		
REV. LTR: -	VERSION: 00	TDR: 000000538207
FILE: \MGA\00000\682	REVISED: 11:54:06 04/30/2010	
MTL: -	BY: RAGRA	

BALDOR

CONN DIAG - STANDARD 3 LEAD
SH 1 of 1

416820-036